



**DIRECT**  
SUPPLY INC  
SURFACE MATERIALS \ CABINETS \ HARDWARE

*Designs of distinction*<sup>®</sup>  
Kitchen, Bath & Home  
by BWI

Decorative wood materials and metal components for kitchen, bath and home.

## METAL ACCENTS

Brushed Aluminum, Chrome, Flat Black, Polished Brass, Satin Brass, Stain Stainless, & Warm Bronze



### METALLIC TRIM

- Standard length is 72".
- 6 Styles and 7 Finishes. Custom sizes available up to 144" long.
- Varied thicknesses and styles for multiple applications.
- Attached with UHB tape Sold in 8' roles.
- Easy to cut onsite or in a manufacturing facility.
- Matching column sleeves for wood columns and bun feet are available.
- Anodized finishes won't chip, peel, rust or corrode.
  - some finishes may fade if used outdoors.
- Applications: Cabinet door trim, molding & millwork accents, and more!

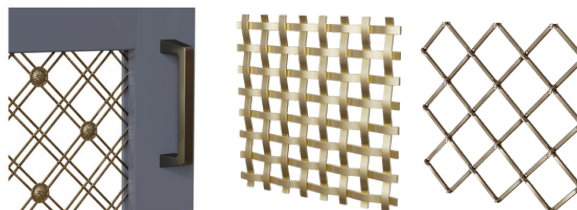
## METAL GRILLE

Antique Brass, Antique Copper, Antique Pewter, Satin Brass, Stain Nickel, Stainless Steel, & Flat Black



### DECORATIVE GRILLE

- Electroplated Steel-Hand Woven, not welded at the joints.
- Made In The USA.
- Available in both Diamond and Square patterns.
- (14) Styles, (7) Finishes
- Stain Brass, Antique Brass, Flat Black, Stainless Look, Antique Copper, Stain Nickel.
- Cut-To-Size to fit in cabinet doors. 3 Sq. Ft minimum.
- Standard: Sheet sizes: 24" X 72" & 36" X 48"
- Imported Mesh also available
  - Woven from premium stainless steel from Italy.



AVAILABLE CUT-TO-SIZE  
OR  
AS WHOLE AND HALF SHEETS



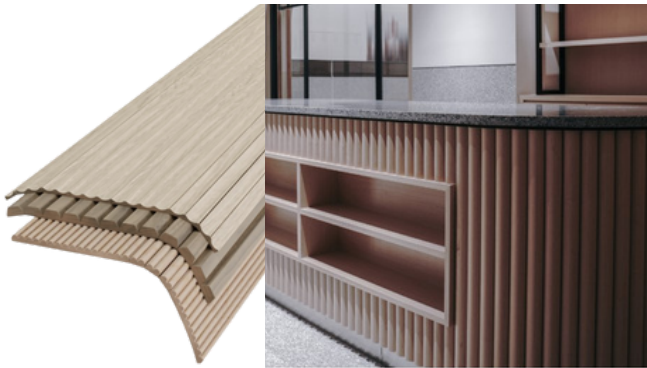
**DIRECT**  
SUPPLY INC  
SURFACE MATERIALS \ CABINETS \ HARDWARE

*Designs of distinction*<sup>®</sup>  
Kitchen, Bath & Home  
by BWI

Decorative wood materials and metal components for kitchen, bath and home.

## READY-TO-FINISH TAMBOUR

Red Oak, Hard Maple, Paint Grade, Walnut & White Oak



### FLEXIBLE PANELS

- Individual slats attached to cloth or paper backing.
- Designed for wall and furniture applications.
- 19 Styles-Hard Maple, Red Oak, White Oak, Paint Grade Poplar, Walnut.
- 12" and 24" wide, 48" and 96" long. Can be cut down to reduce shipping costs.
- Easily attached with off-the-shelf PVA, contact adhesive, epoxy, or high-quality panel adhesives.
- Ready to stain or paint.
- Made in the USA.
- 12" X 96" Panels = 8 Sq. Ft.
- 12" X 48" Panels = 4 Sq. Ft.
- 24" X 48" Panels = 8 Sq. Ft.



### SOLID PANELS

- CNC wood panels routed with pattern.
- Designed for cabinet and cabinet door applications.
- 8 Styles-Hard Maple, Cherry, Red Oak, Alder, White Oak, Paint Grade Maple, Walnut.
- 24" X 46" solid panels. .25" and .374" thick for use as insert in door frame.
- Must be finished on both faces to minimize warping.
- Made in the USA.
- Can be glued like flexible panels or used as an insert in a frame. (similar to a glass insert)
- 24" X 46" Panels = 7.66 Sq. Ft.

## RATTAN

Natural or Bleached



### RATTAN

- Natural Reeds. Grown in Mexico, Hand Woven in the USA.
- 3 Styles
- Sold Cut-to-Size in cabinet doors. 3 Sq Ft. minimum.
- Uncut: 36" wide X 48" length



**DIRECT**  
SUPPLY INC  
SURFACE MATERIALS \ CABINETS \ HARDWARE

*Designs of distinction*<sup>®</sup>  
Kitchen, Bath & Home  
by BWI

Decorative wood materials and metal components for kitchen, bath and home.

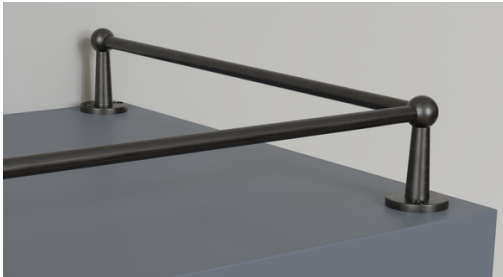
## SHELVING

### BISTRO



- Available in three styles
  - Traditional,
  - Flush
  - Cantilever.
- Multiple options for configurations including wall, floor, countertop and ceiling mounts.
- 2 Stock Finishes
- 8 Non-Stock Finishes

### GALLERY RAIL



36" rods | Included installation screws.

#### Traditional Brass

- Corner end and center posts
- 4 finishes: Polished Brass, Satin Brass, Black and Chrome.

#### Contemporary-Stainless Steel

- End Center and corner connector posts
- Stainless Steel Only

### FLOATING



#### Hand Scrapped Hardwood

- 8" and 12" deep flat shelves.
- 36" and 60" wide.
- 10" deep floating shelves 30" X 30" corner.
- 10" deep linear floating shelves available 24", 36" and 48" width.
- Floating shelves include steel support brackets.

#### Contemporary Hardwood

- 12" deep corner shelf. 24" X 24" and 30" X 30".
- 10" deep linear floating shelves available in 24", 36" and 48" width.
- Include steel support brackets.

### SLIMLINE



#### Aluminum Shelving

- Aluminum
- 4" and 6" deep channel Shelves. 24", 36" and 48" wide.
- Brushed anodized aluminum and powder, coated black.
- Includes OEM French Cleat hardware for easy assembly.
- Made in the USA.



**DIRECT**  
SUPPLY INC  
SURFACE MATERIALS \ CABINETRY \ HARDWARE

*Designs of distinction*<sup>®</sup>  
Kitchen, Bath & Home  
by BWI

Decorative wood materials and metal components for kitchen, bath and home.

## COLUMNS, LEGS & FEET

Wood and Metal



## BUN FEET

- 60+ styles available.
- Hardwoods include: Hard Maple, Cherry, Alder, Red Oak, White Oak, Walnut, Hickory, Paint Grade.
  - Not all species are available in all styles
- Metals include solid brass, powder-coated steel, and anodized aluminum.
- Available with Hanger bolts for furniture installation.
- Sanded to 180 grit. ready to stain or paint.

## LEGS, COLUMNS & POSTS

- 60+ styles are available.
- Hard Maple, Cherry, Alder, Red Oak, White Oak, Walnut, Hickory, paint grade.
  - \*not all species are available in all styles
- Sanded to 180 grit. Ready to stain or paint.
- Made in the USA
- Splitting and notching are available by quote.

## X ENDS

Wood and Steel



## HARDWOOD X-PANELS

- 34.5 High - (2) thickness 1 1/2 and 3" thick
- Two widths 25" and 36" wide
- With or without trimmable bottom.
- Matching hardware backer available.
- Hard Maple, Cherry, Alder, red Oak, White Oak, Walnut, Hickory, Paint Grade.
  - not all species are available in all styles
- Made in the USA
- Lap Joint and mortise and tenon construction
- Sanded to 180 grit. Ready to stain or paint
- Custom ends also available by quote.

**THOUSANDS OF STANDARD SKUS AND CUSTOMIZATIONS AVAILABLE.**

**CONTACT US FOR A QUOTE OR MORE INFO!**

1055 36th Street SE, Grand Rapids, MI 49508 | [www.directsupplyinc.com](http://www.directsupplyinc.com)

P: 616-245-4415 | F: 616-245-1890 | [sales@directsupplyinc.com](mailto:sales@directsupplyinc.com)



**DIRECT**  
SUPPLY INC  
SURFACE MATERIALS \ CABINETRY \ HARDWARE

*Designs of distinction*<sup>®</sup>  
Kitchen, Bath & Home  
by BWI

Decorative wood materials and metal components for kitchen, bath and home.

## TOE KICK VENT COVER

Wood and Metal



### WOOD

- Four Wood Styles - Paint or Stain
- Hardwoods include Hard Maple, Cherry, Alder, Red Oak, White Oak, Walnut, Hickory, Paint Grade.
  - Not all species are available in all styles

### METAL

- Two Metal Styles
- Two Metal finishes: Flat Black & Satin Brass



## OUTLET & SWITCH COVERS

Wood



### WOOD

- Many styles
- Single, Double, and Combos
- Hard Maple, Cherry, Alder, Red Oak, White Oak, Walnut, Hickory
  - \*not all styles are available in every species
- Made in the USA
- Designed for use with wood millwork & cabinetry.

**THOUSANDS OF STANDARD SKUS AND CUSTOMIZATIONS AVAILABLE.  
CONTACT US FOR A QUOTE OR MORE INFO!**

1055 36th Street SE, Grand Rapids, MI 49508 | [www.directsupplyinc.com](http://www.directsupplyinc.com)  
P: 616-245-4415 | F: 616-245-1890 | [sales@directsupplyinc.com](mailto:sales@directsupplyinc.com)